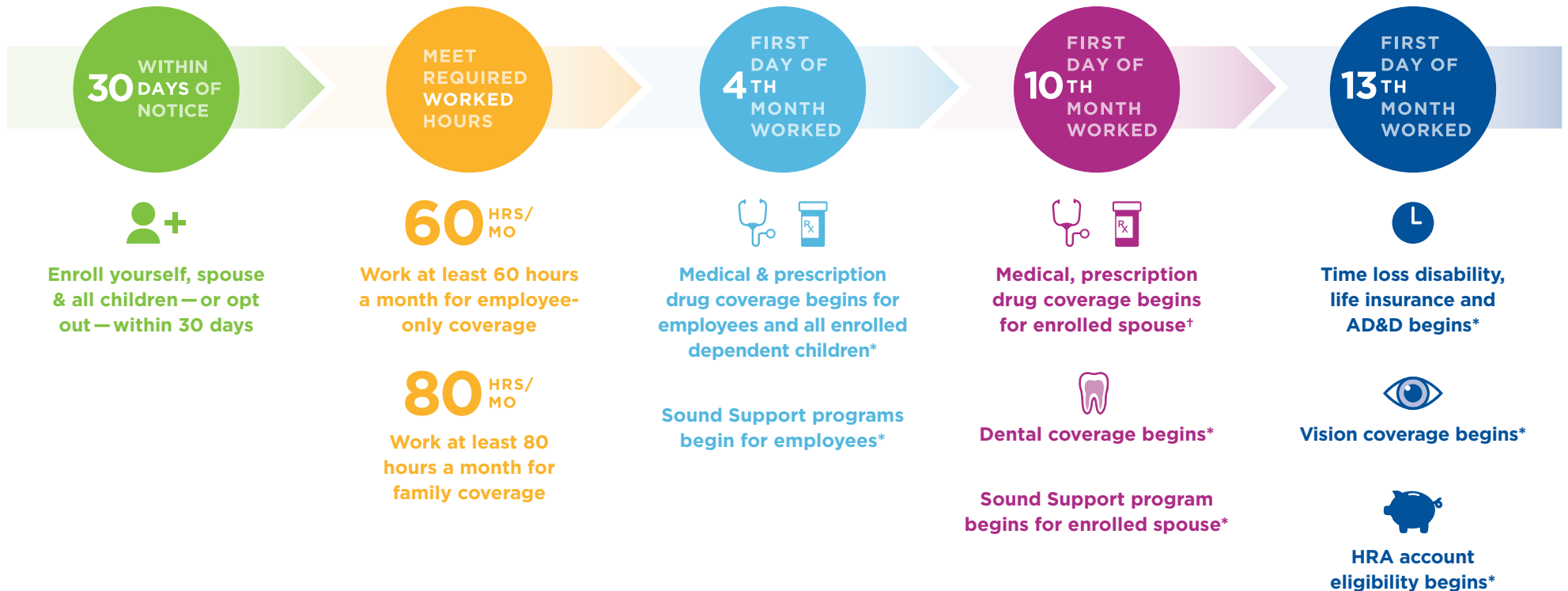


Sound Plan Benefit Eligibility Timeline



Please visit www.soundhealthwellness.com for complete details on:

- How to enroll
- Restrictions around enrollment and eligibility
- Choices that can impact your employee premium
- Additional information regarding worked hours requirements

For questions regarding eligibility and the enrollment process please call: **(206) 282-4500** or **(800) 225-7620**

**Or the first of the month following 60 days after the employee reaches 1200 hours, if required work hours are met.*

**If required work hours are met.*